

# PC-D331

## Drop-In Kitchen Sink

### 34 1/4" X 19 5/8" X 8"



\*1 year limited manufacturer's warranty included

### DESIGN FEATURES

Brushed Satin finish

Raised rim profile provides definition and guards against counter spills.

Installation clamps provided for quick & easy installation.

Large polymer sound deadening pads minimize sound.

3 1/2" drain opening.

### CABINET SIZE

Maximum cabinet size required: 36"

### MATERIAL

Fabricated from type 304, 19 gauge stainless steel

Constructed from 18/9 stainless steel for durability and superior longevity

Net Sink Weight = 12 lbs, 5.4 kg

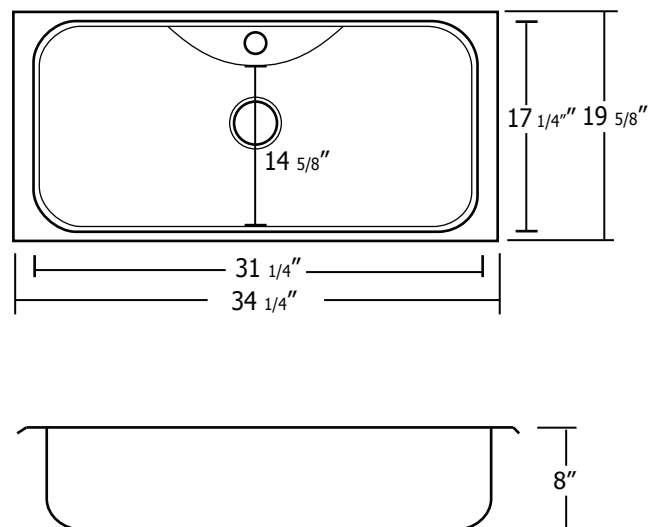
### INCLUDING

Metal 3 1/2" stainless steel strainer

Template

### SINK DIMENSIONS

Diagram not to scale



This sink complies with CSA Standards

All measurements  $\pm 1/4$ "

In keeping with our policy of continuing product improvement, Acri-Tec Industries Corp., reserves the right to change product specifications without notice.