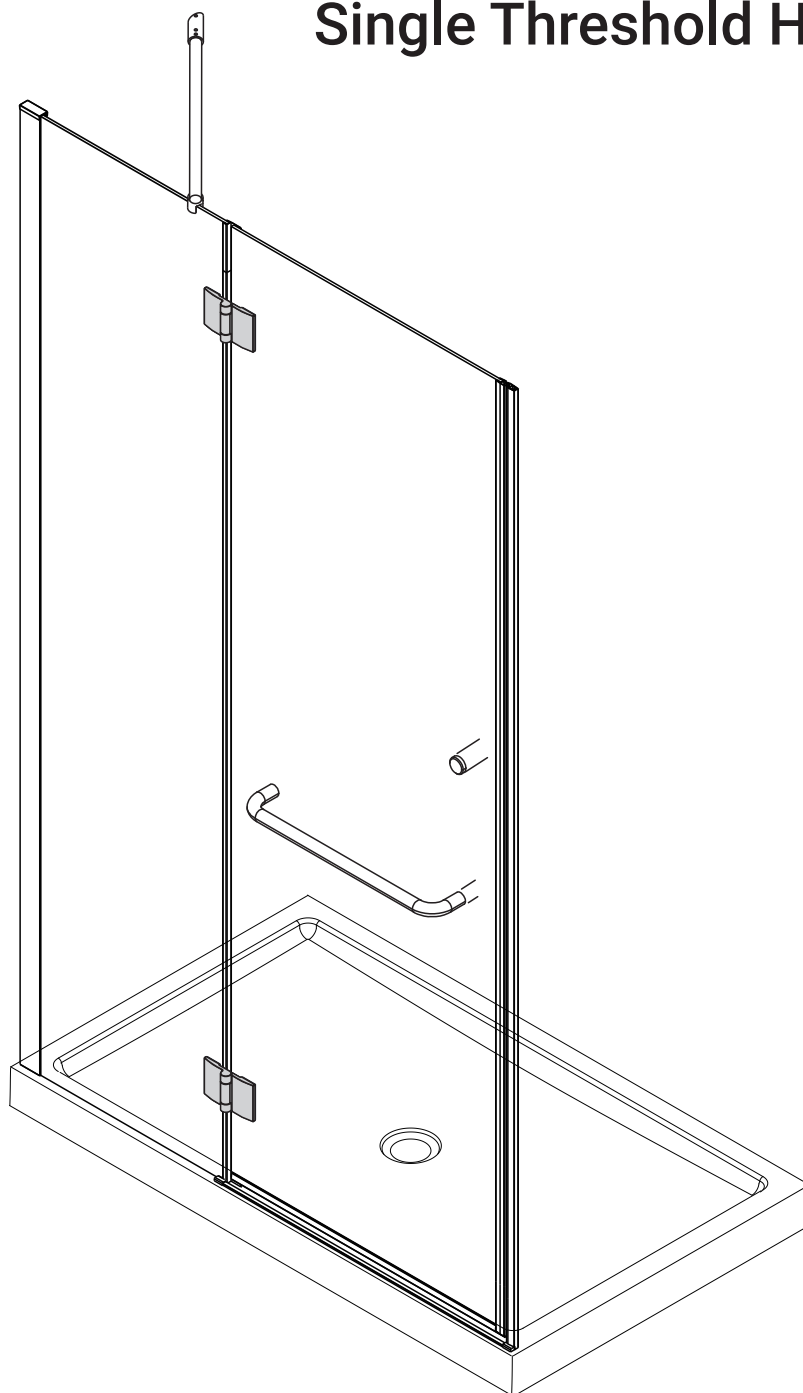


# H02 Series

## Single Threshold Hinged Door



Updated: 2021/02/03

### INSTALLATION MANUAL

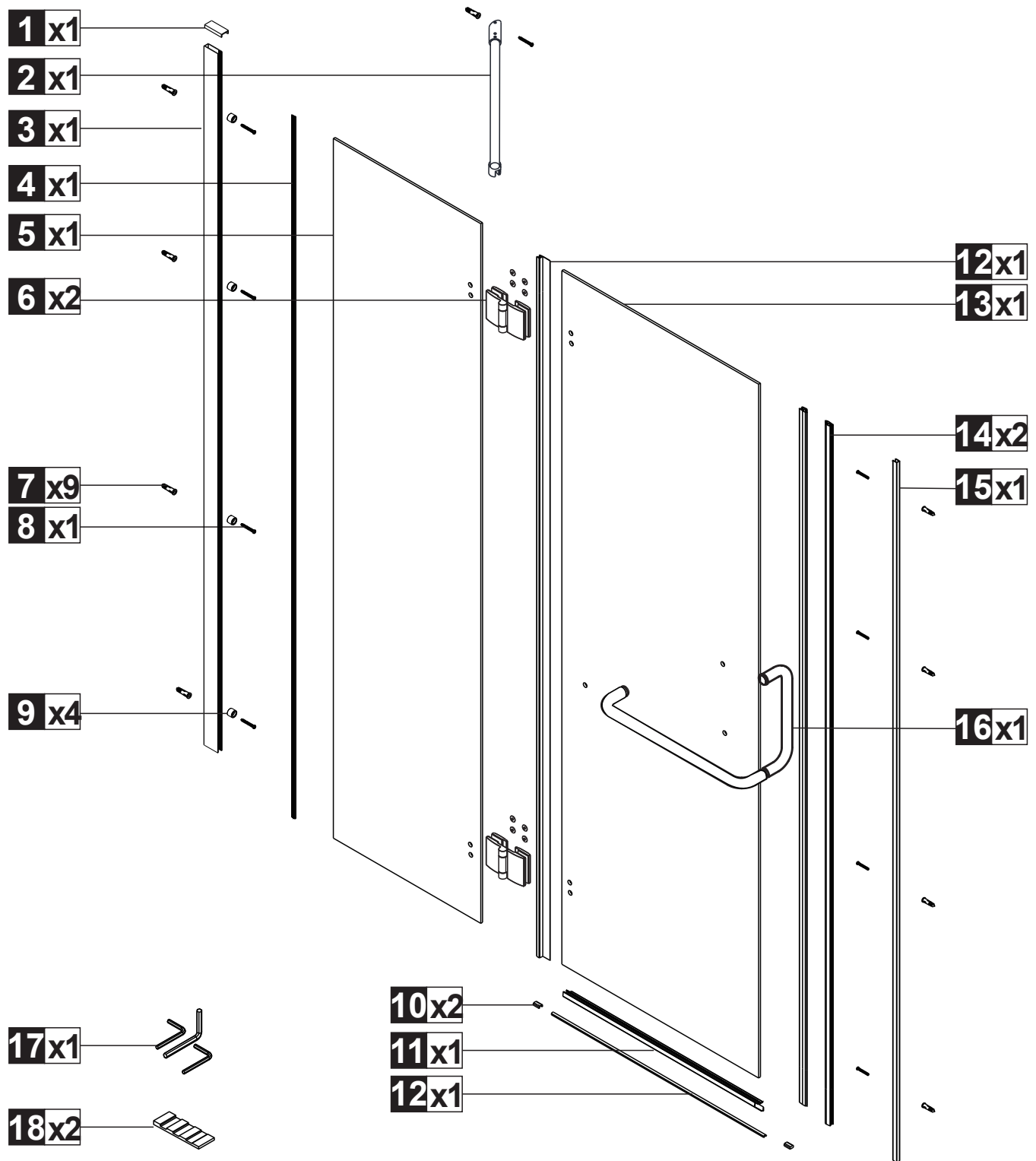
#### IMPORTANT

- Thoroughly inspect your product before proceeding with the installation.
- The warranty will be void if the product is installed with a conspicuous defect.

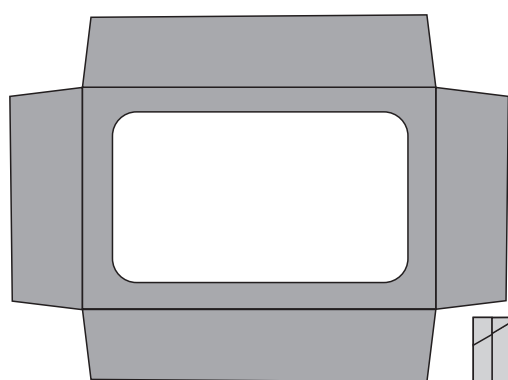
#### CAUTION

- To prevent leaks, silicone must be applied on the outside of the shower and not on the inside!
- Read all instructions carefully before starting the installation.
- Save this manual for future reference.

# PARTS LIST

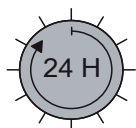
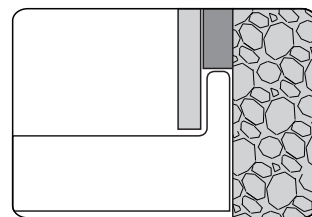


## PARTS LIST FIXED PANEL



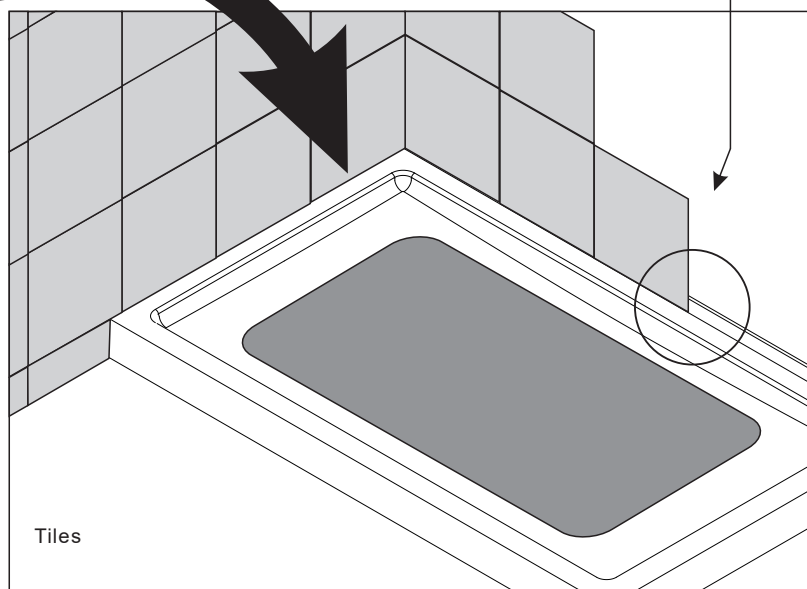
To protect your shower base finish.

20~30mm

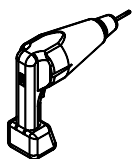


### WARNING !

Wait 24h before proceeding with the installation of the shower door. This will ensure that the finish and mortar is dry.



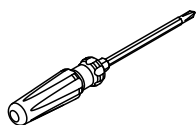
## TOOLS AND MATERIALS REQUIRED



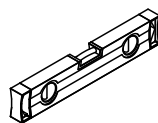
DRILL



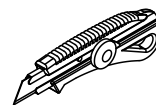
SCREWS



SCREWDR



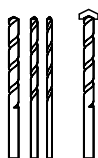
LEVEL



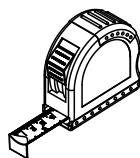
PRECISION KNIFE



SILICONE



DRILL BITS: 1/8", 3/16" ET 1/4"  
\*MASONRY DRILL BIT



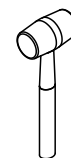
MEASURING TAPE



SET SQUARE



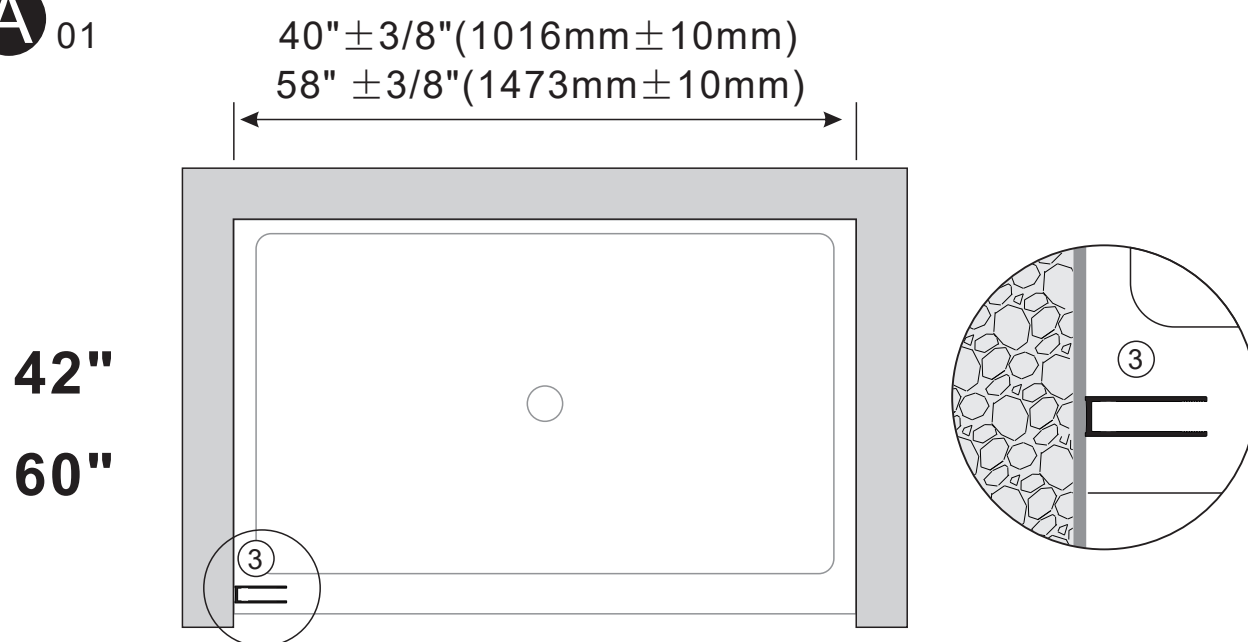
PENCIL



MALLET

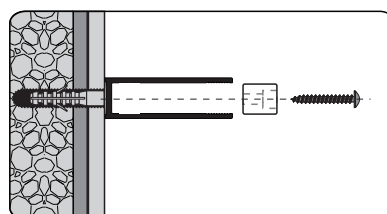
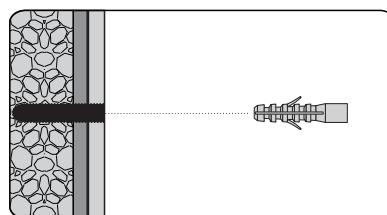
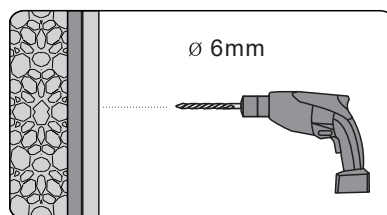
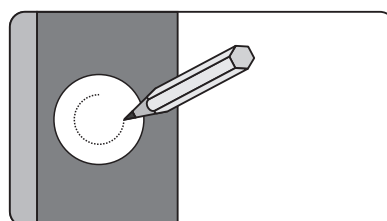
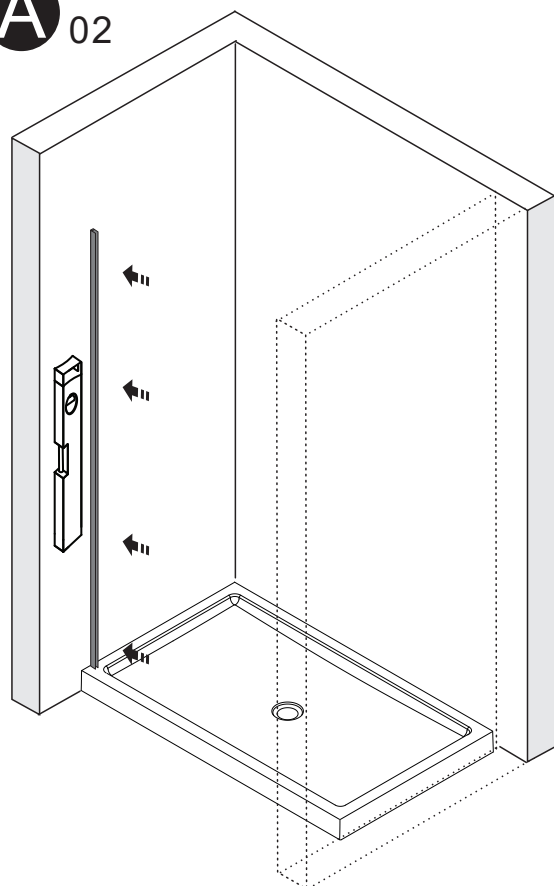
## CONTINUED

**A**<sub>01</sub>



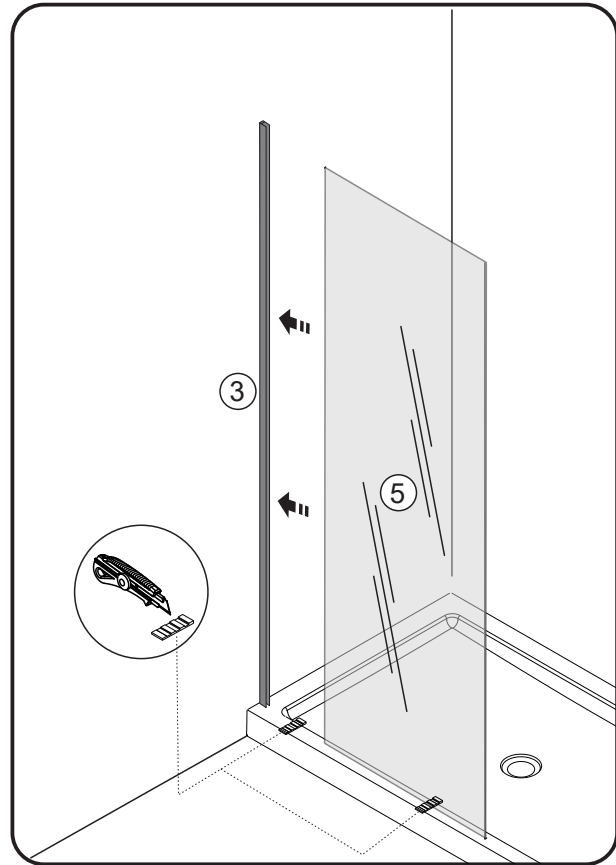
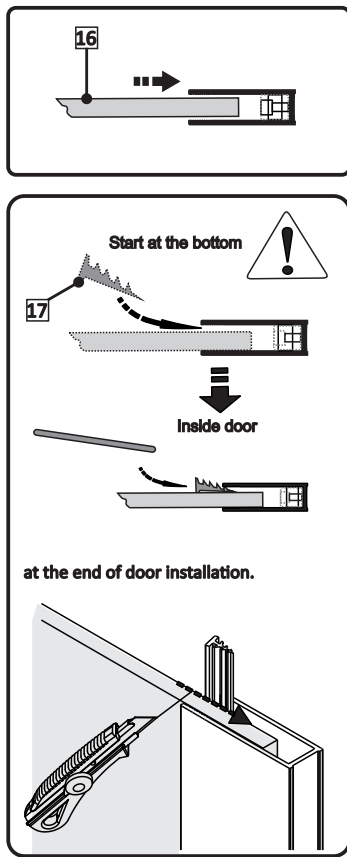
## WALL JAMB INSTALLATION

**A**<sub>02</sub>



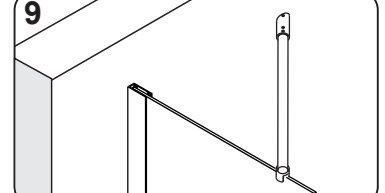
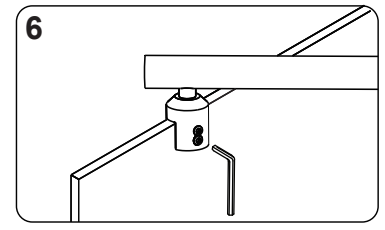
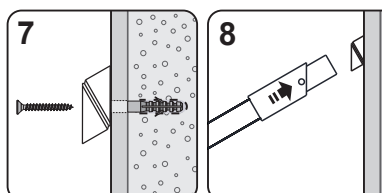
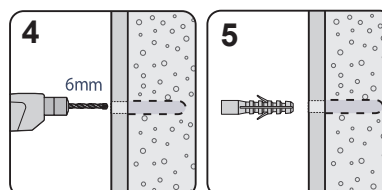
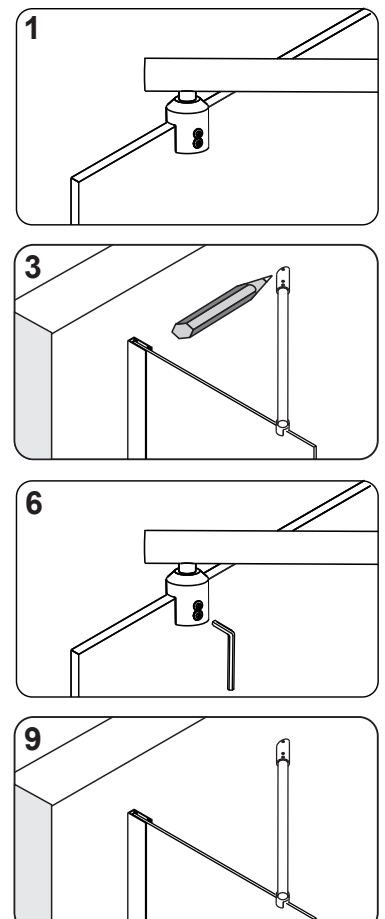
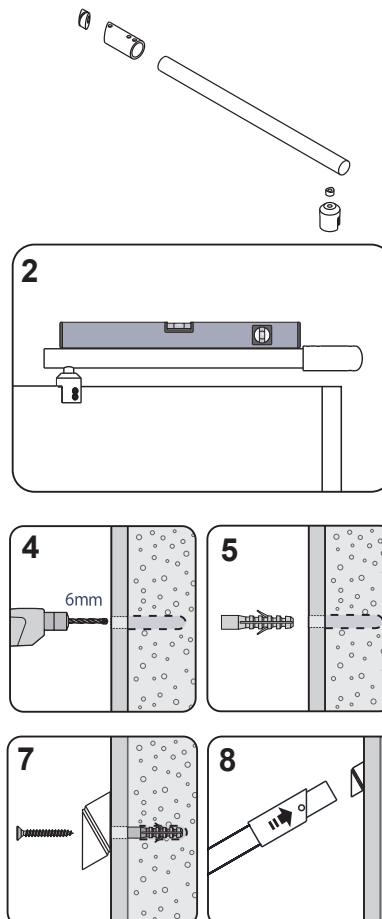
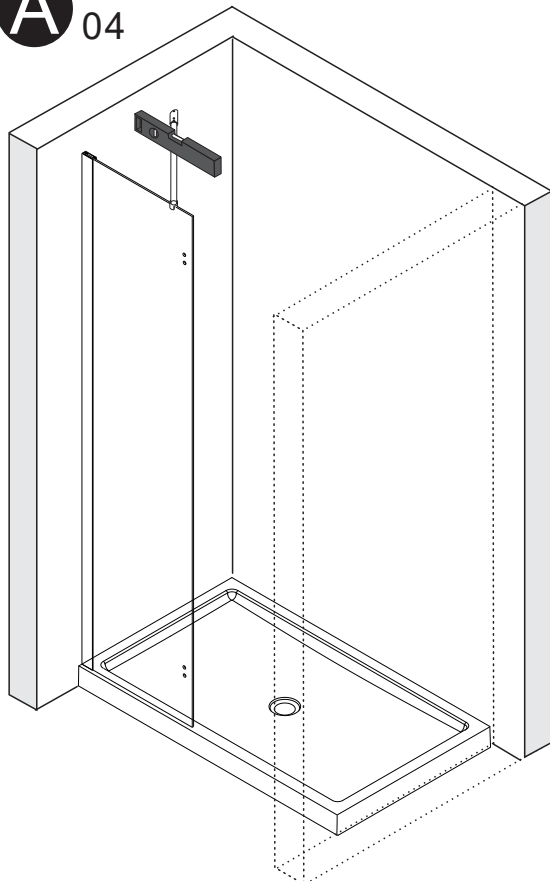
# CONTINUED

**A** 03



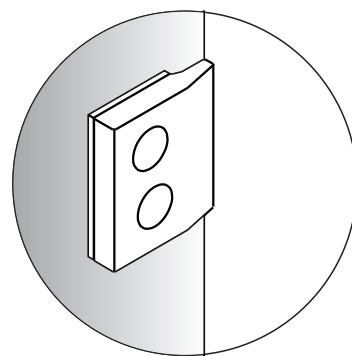
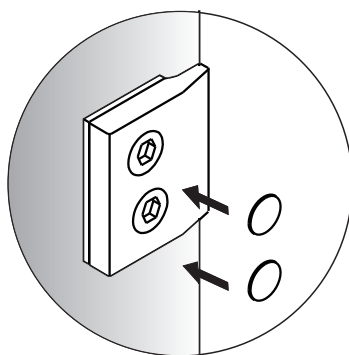
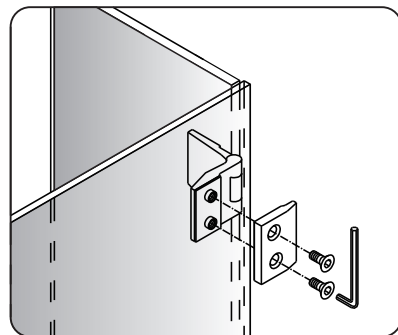
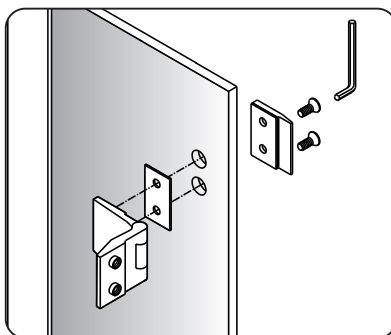
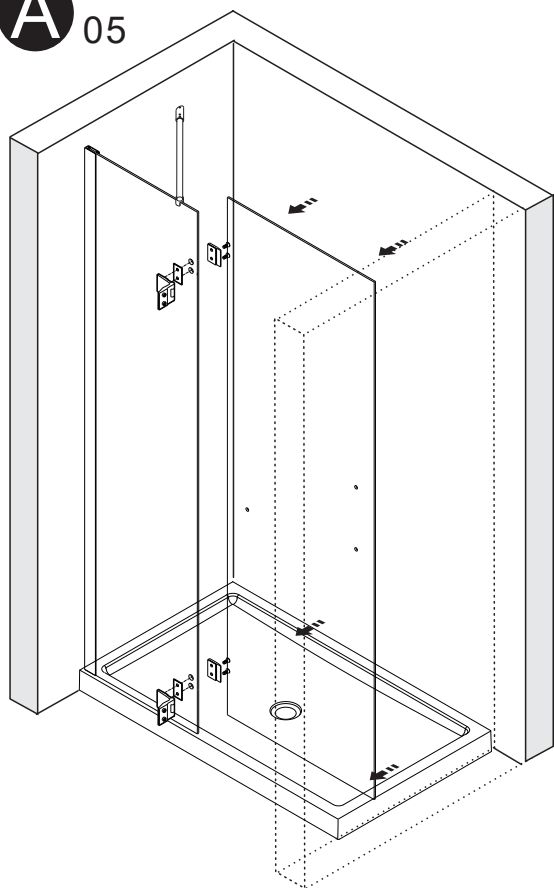
# CONTINUED

**A** 04



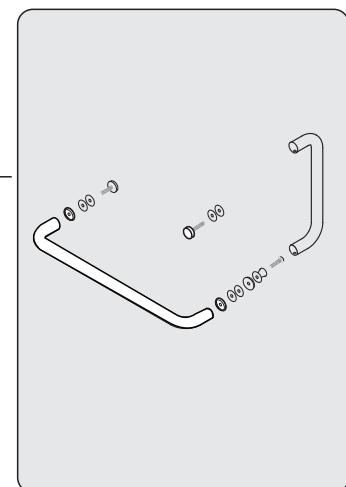
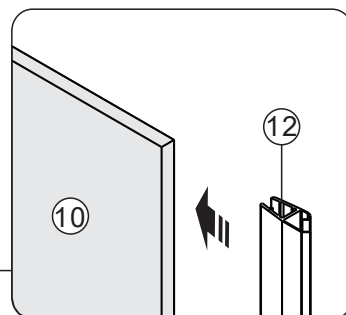
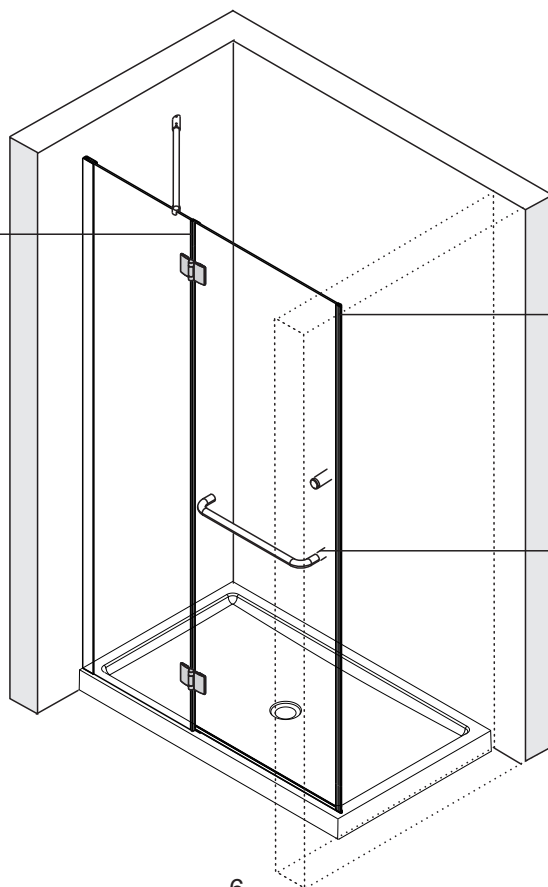
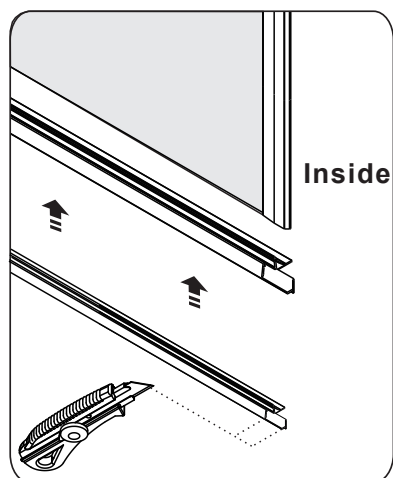
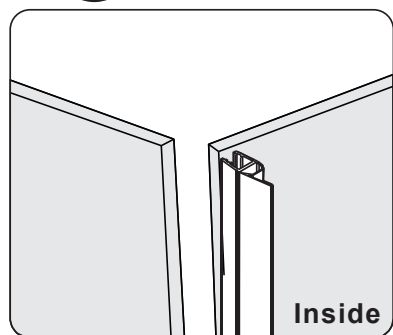
# CONTINUED

**A** 05



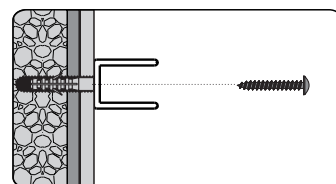
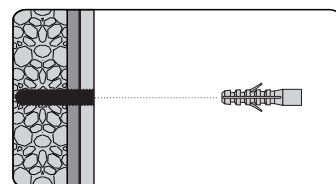
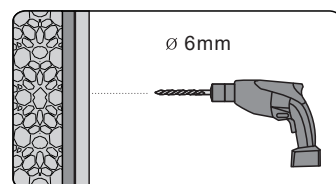
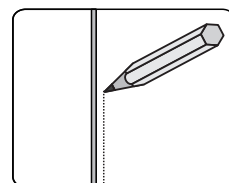
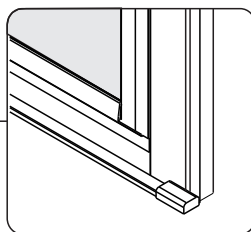
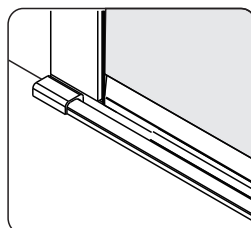
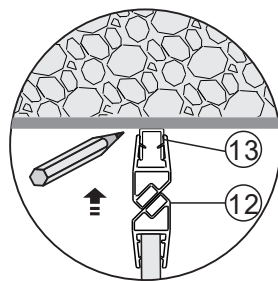
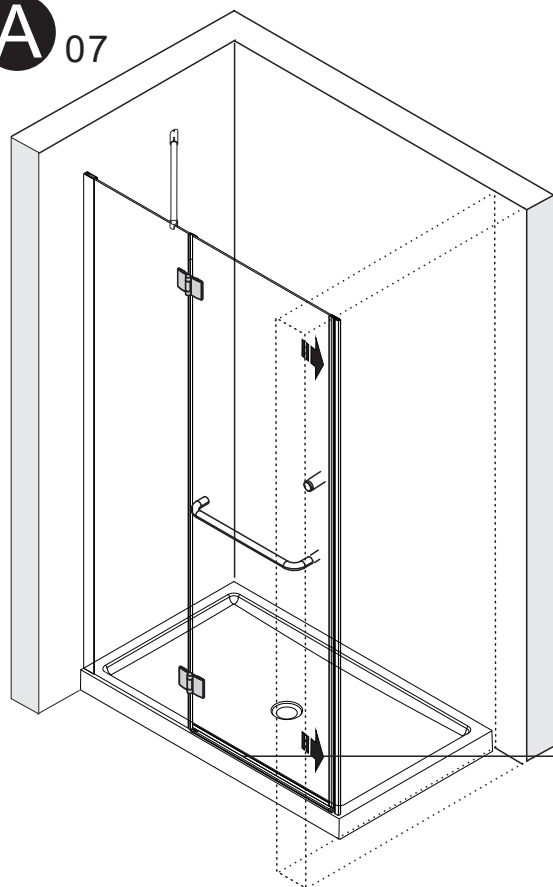
# CONTINUED

**A** 06



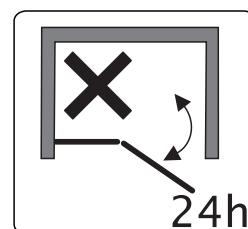
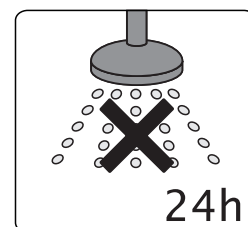
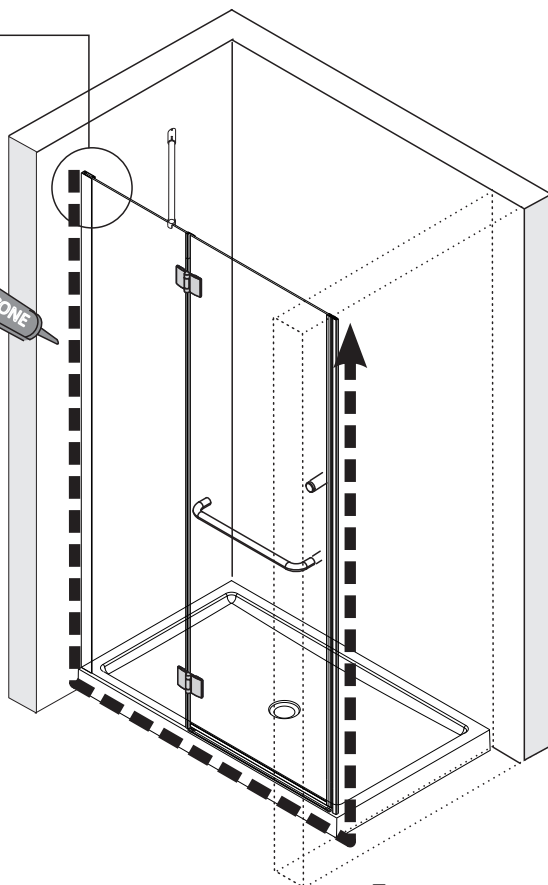
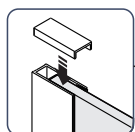
## CONTINUED

**A** 07



## CONTINUED

**A** 08





## Acritec Industries Corp.

27049 Gloucester Way  
Langley, B.C. V4W 3Y3

Tel: 604.607.0856

Fax: 604.607.0857

Email: [info@acritec.com](mailto:info@acritec.com)

Website: [www.acritec.com](http://www.acritec.com)