



## Ebony Extended Series

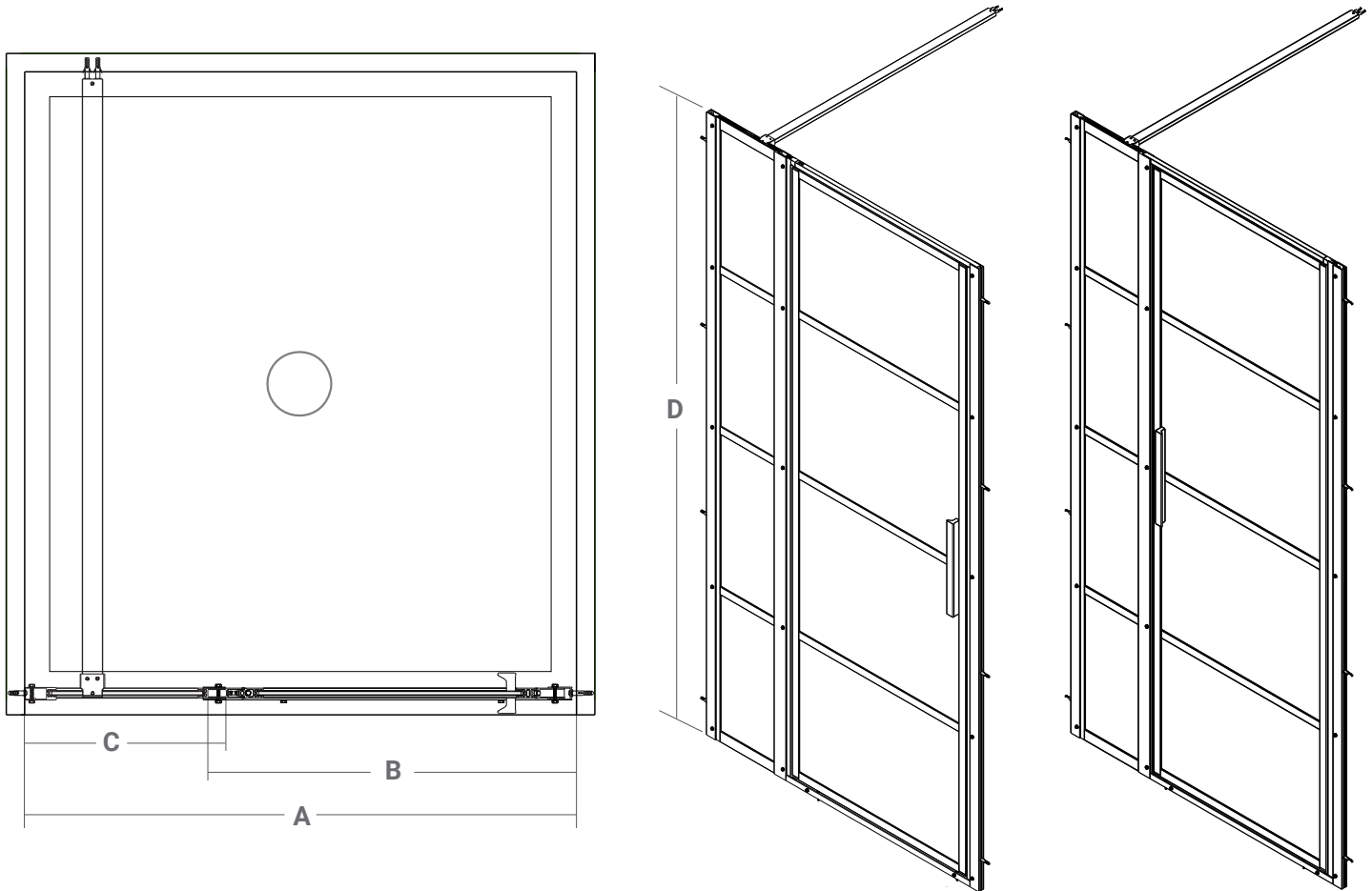
Single Threshold Pivot Door

### Product Specifications

- 6mm Tempered glass wall panels with easy cleaning protective coating
- 6mm Tempered door panel with easy cleaning protective coating
- Stainless steel (INOX) hardware for improved durability
- Dual seal profiles for improved water retention
- 1 Year limited manufacturer's warranty included

### Design Features

- Matte black finish
- Reversible door
- Easy adjustment door system
- Frame finish design
- Magnetic closure



Nominal Base Size	A Finished Span	B Door Span	C Fixed Span	D Height	Matte Black Part #
48"	45 1/8" - 46 3/8"	33 1/8" - 34 3/8"	13 1/8"	78 3/4"	51723.51733
60"	57 1/8" - 58 3/8"	33 1/8" - 34 3/8"	25 1/8"	78 3/4"	51723.51743

**Acritec Industries Corp.**

27049 Gloucester Way  
Langley, B.C. V4W 3Y3

**Tel:** 604.607.0856

**Fax:** 604.607.0857

**Email:** info@acritec.com

**Website:** www.acritec.com

In keeping with our policy of continuing product improvement, Acritec Industries Corp. reserves the right to change product specifications without notice.

**Important**

\*While we strive to provide accurate measurements for our customers, sometimes mistakes happen. Our goal is to help things run smoothly from shipment to installation, so if you notice any errors in our spec sheets, please let us know.

Our products are handmade & hand finished so you can expect a tolerance of  $\pm 1/4"$  on all measurements. We strongly recommend waiting until your ordered product is on-site before attempting any rough-in carpentry or plumbing.

If you want to verify any of our measurements, please feel free to call or email us.

\*Drawings are not to scale